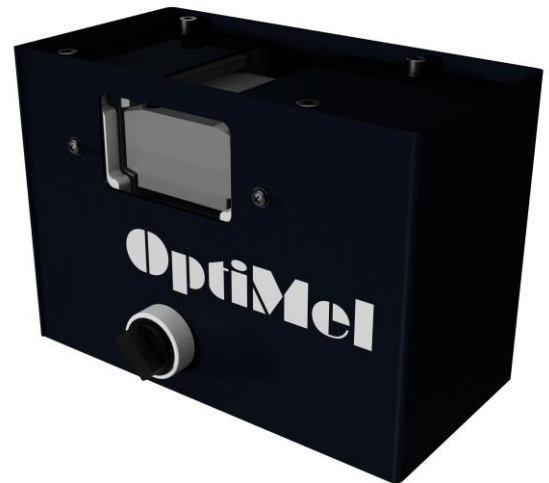


OptiMel 300

This clamping unit for small toolings can be used in combination with the manual processing unit OM 100 for an comfortable processing of sample and small series production.



Consisting off:

- Base frame
- Fixed clamping claw
- Slackly pneumatically directed clamping claw
- Manually operated 5/3 pneumatic valve

Combinable with:

- Manual unit OM 100
- Timer

Dimensions:

- Outer dimension: B240 x T130 x H167 mm
- Clamping dimension: B70 x T80 x H40 mm

